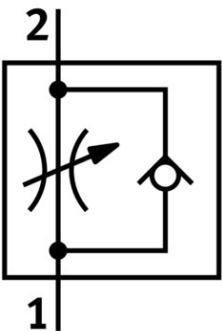


One-way flow control valve GRA-1/4-B

Part number: 6509

FESTO



Datasheet product reliability

[PDF](#) General operating condition

The information in this "Product reliability data sheet" is based on products being used as intended. This includes complying with all specifications in data sheets, catalogues, user documentation and the general operating conditions. The user alone is responsible for determining whether a product is suitable for a particular application.

Feature	Value
Common Cause Failure (CCF) measures ¹⁾	Observe compressed air quality Comply with ambient temperature and temperature of medium
Service-life value B ₁₀ ²⁾	10 Mio cycles

- 1) CCF measures have to be verified for the precise application. Therefore, the list with measures is not meant to be exhaustive.
- 2) The ascertainment of characteristic service life values is generally based on the ISO 19973 "Pneumatic fluid power - Assessment of component reliability by testing".