



WIRELESS MBUS RFM-RX2 RECEIVER - DEVICE MANUAL  
*MANUALE DEL RICEVITORE - WIRELESS MBUS RFM-RX2*

WIRELESS MBUS  

---

RFM-RX2



## Table of contents

1. Introduction .....	2
2. System requirements .....	2
3. Installation .....	2
3.1 Windows XP Installation .....	3
3.2 Windows7/Vista Installation .....	5
3.3 Windows 8 Installation .....	9
3.4 Windows 8.1 Installation .....	10
3.5 Windows 10 Installation .....	11

## 1. Introduction

The Wireless MBUS RFM-RX2 Receiver is an USB device that allows data collection from BMeters WMBus based family products.

The RFM-RX2 receiver is designed to be used with the B METERS' configuration and acquire PC Tool for the transmission of water and heat costs.

## 2. System Requirements

- **1 free USB port**
- **Operating System**

Windows 10, Windows 8.1, Windows 8 Windows 7, Windows Server 2003 SP2, Windows Server 2008, Windows Server 2008 R2, Windows Vista SP1, Windows XP SP3.

## 3. Installation

Plug into an available USB port of your PC the USB flash drive containing both the informative documentation and the software (or open the files downloaded from the B METERS scrivere BMETERS official website [https://www.bmeters.com/wp-content/uploads/2021/06/Bmeters\\_RF\\_M\\_RX2-1.zip](https://www.bmeters.com/wp-content/uploads/2021/06/Bmeters_RF_M_RX2-1.zip) or open the files received via E-Mail from B METERS or supplier) and unzip to the desktop the folder "**Bmeters\_RF\_M\_RX2.zip**":



## Indice

1. Introduzione .....	2
2. Requisiti di sistema .....	2
3. Installazione .....	2
3.1 Installazione Windows XP .....	3
3.2 Installazione Windows 7/Vista .....	5
3.3 Installazione Windows 8 .....	9
3.4 Installazione Windows 8.1 .....	10
3.5 Installazione Windows 10 .....	11

## 1. Introduzione

*Il ricevitore USB Wireless-MBus RFM-RX2 è un dispositivo USB per la raccolta dei dati di lettura trasmessi dai moduli Wireless MBus della famiglia di prodotti B METERS.*

*Il ricevitore RFM-RX2 è progettato per essere utilizzato congiuntamente ai programmi BMETERS di configurazione e lettura, per la trasmissione dei costi di acqua e calore.*

## 2. Requisiti di sistema

- **1 porta USB libera**
- **Sistema Operativo**

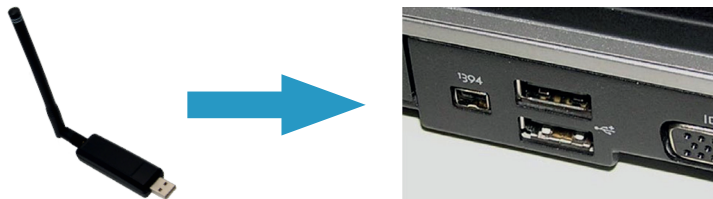
Windows 10, Windows 8.1, Windows 8, Windows 7, Windows Server 2003 SP2, Windows Server 2008, Windows Server 2008 R2, Windows Vista SP1, Windows XP SP3.

## 3. Installazione

*Inserire in una porta USB libera del PC il dispositivo di archiviazione di massa contenente la documentazione e il software (oppure aprire i file scaricati dal sito ufficiale B METERS [https://www.bmeters.com/wp-content/uploads/2021/06/Bmeters\\_RF\\_M\\_RX2-1.zip](https://www.bmeters.com/wp-content/uploads/2021/06/Bmeters_RF_M_RX2-1.zip) o i file ricevuti tramite E-Mail da B METERS o dal fornitore) e scompattare la cartella "**Bmeters\_RF\_M\_RX2.zip**" sul desktop:*



Now plug the RFM-RX2 receiver.



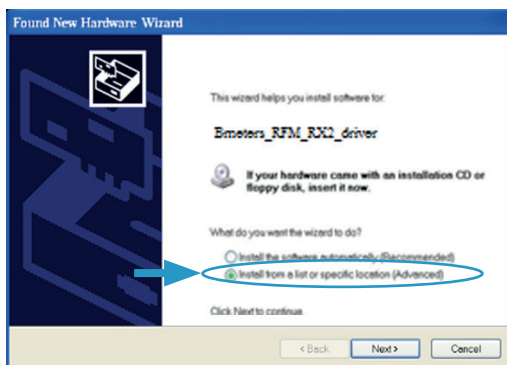
At this point five methods of installation will be explained, depending on the operating system of the computer on which you want to use the receiver (Windows XP, Vista, 7, 8, 8.1, 10).

### 3.1 Windows XP Installation

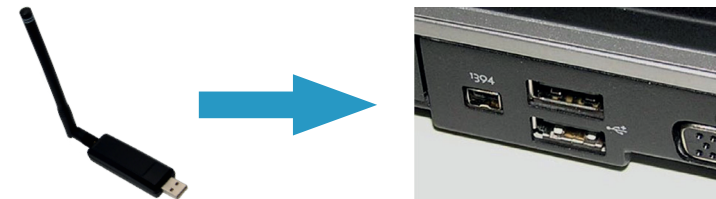
After inserting the RFM-RX2 receiver, it appears a window on the PC screen which alerts that the new hardware has been found:



Select the **“No, not this time”**, as shown in the figure above and click **“Next”**. Then choose **“Install from a list or specific location”**:



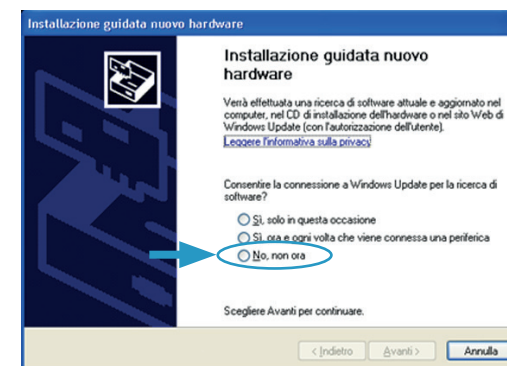
Inserire ora il ricevitore RFM-RX2.



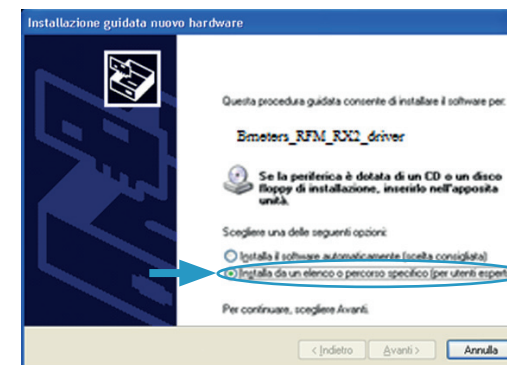
A questo punto verranno illustrate cinque procedure di installazione, a seconda del sistema operativo del pc sul quale si vuole utilizzare il ricevitore (Windows XP, Vista, 7, 8, 8.1, 10).

### 3.1 Installazione Windows XP

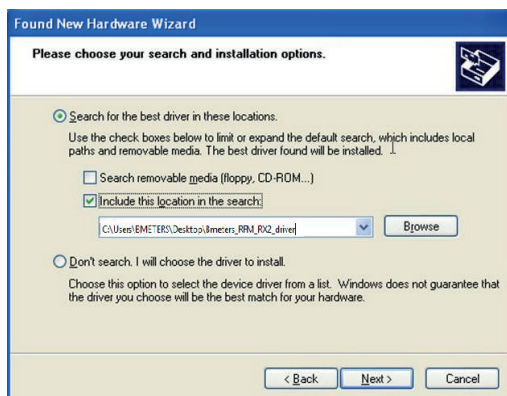
Dopo aver inserito il ricevitore RFM-RX2, sullo schermo del PC compare automaticamente una finestra che avvisa il rilevamento di nuovo hardware:



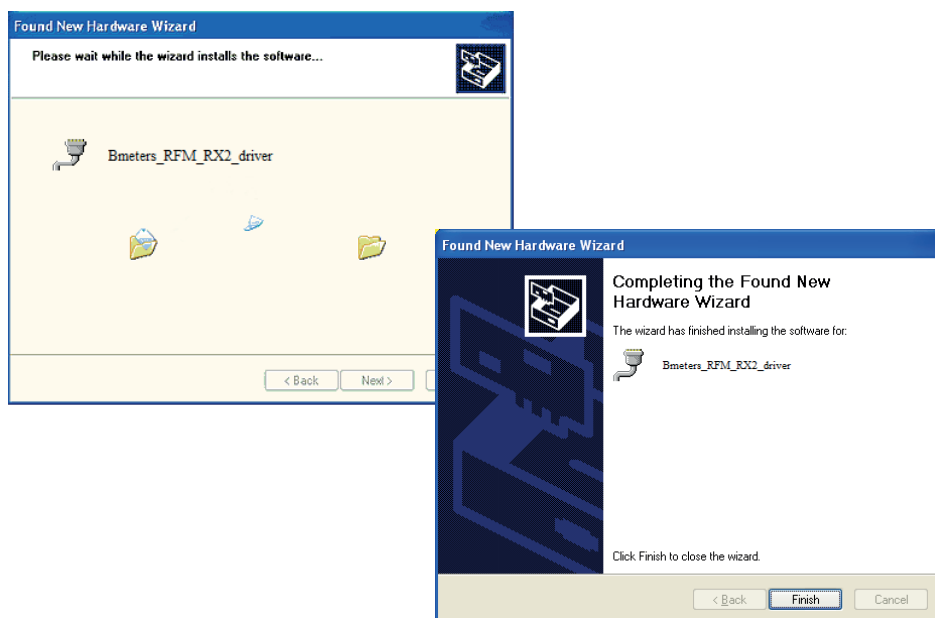
Selezionare la casella **“No, non ora”**, come indicato in figura e premere **“Avanti”**. Scegliere poi **“installa da un elenco o da percorso specifico”**:



Using the **"Browse"** button to select the path to get the folder containing the installation driver **"Bmeters\_RFM\_RX2.inf"**

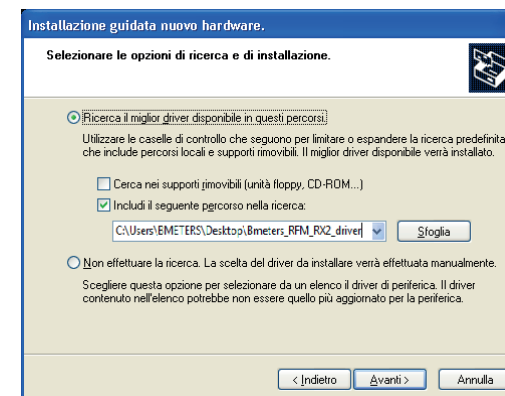


At this point the installation is started up to indication of completion:

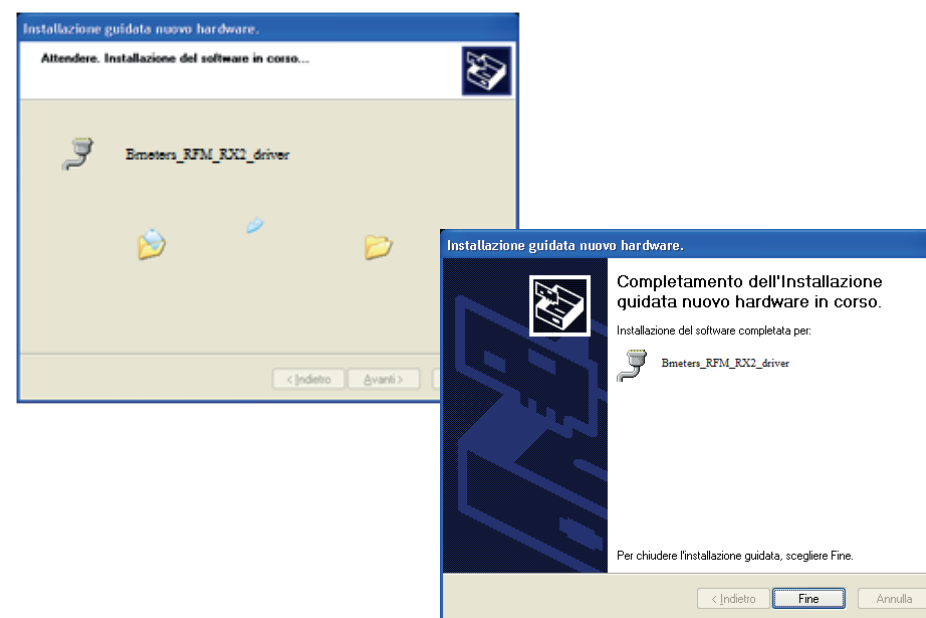


At this point the installation of the driver is finished, so press the button **"Finish"** and the receiver is ready for use.

Tramite il tasto **"Sfoggia"** selezionare il percorso per raggiungere la cartella contenente il driver di installazione **"Bmeters\_RFM\_RX2.inf"**:



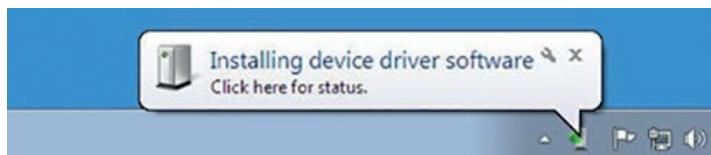
A questo punto l'installazione viene avviata fino alla segnalazione di completamento:



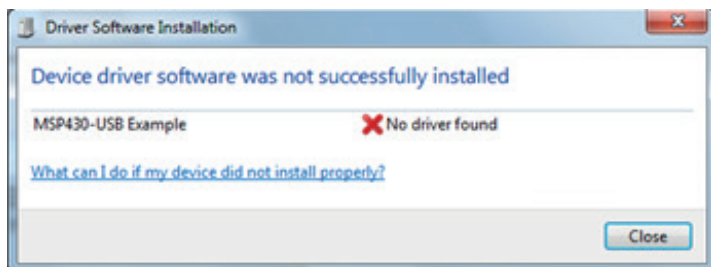
A questo punto l'installazione del driver è conclusa, premere dunque il tasto **"Fine"** e il ricevitore è pronto all'utilizzo.

### 3.2 Windows 7/Vista Installation

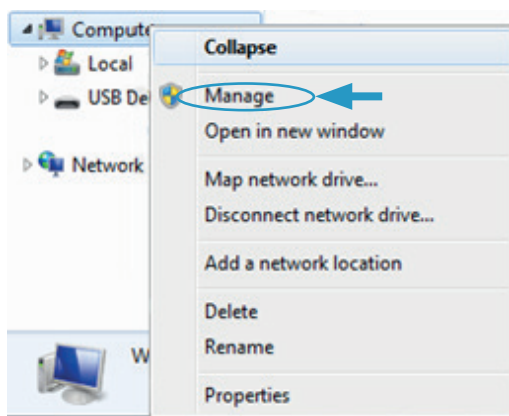
After inserting the RFM-RX2 receiver, it appears a window on the PC screen which alerts that the new hardware has been found:



Immediately after the pc will automatically attempt to install the drivers, then an error dialog will appear:

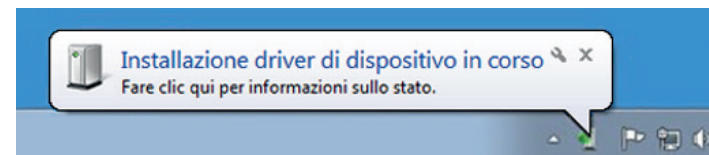


It is necessary to proceed with manual installation of the drivers. Open the **Start** menu, Click with the right mouse button the icon "**Computer**" as shown:

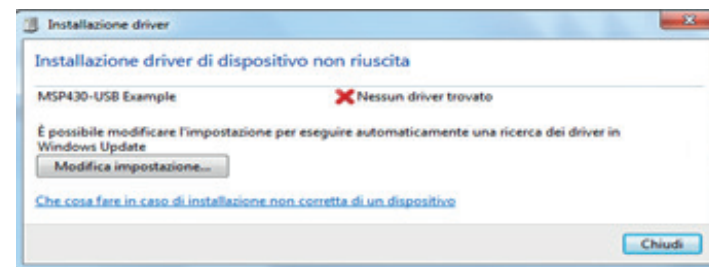


### 3.2 Installazione Windows 7/Vista

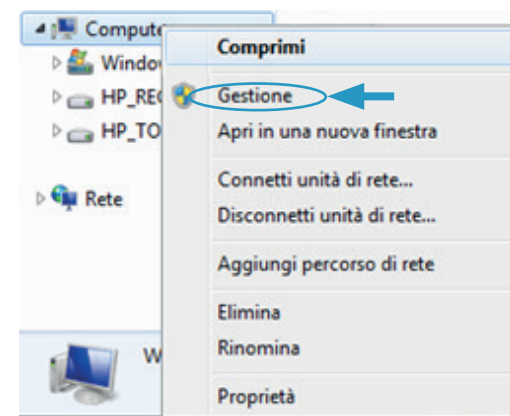
Dopo aver inserito il ricevitore RFM-RX2, sullo schermo del PC compare automaticamente una finestra che avvisa del rilevamento di un nuovo hardware:



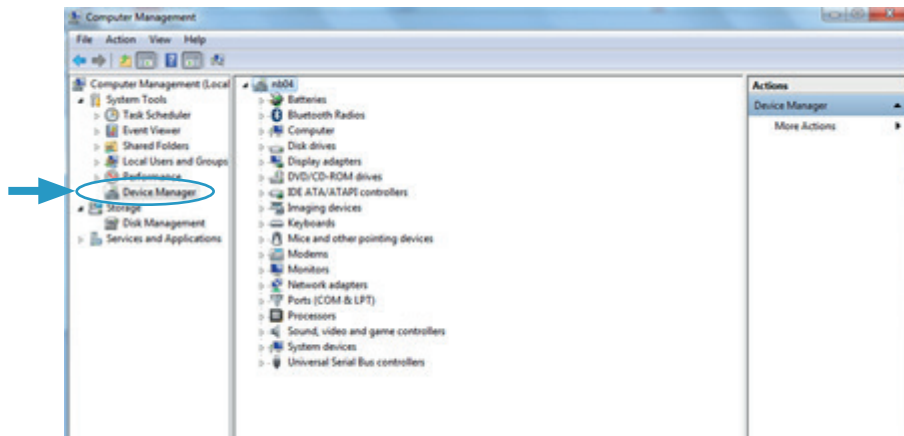
Subito dopo il pc tenterà di installare automaticamente i driver e verrà poi visualizzato un messaggio di errore:



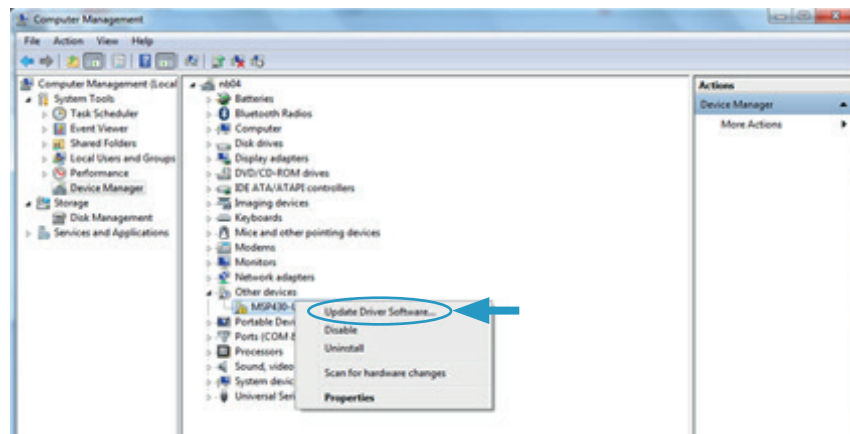
E' necessario procedere con l'installazione manuale dei driver. Aprire il menù **Start**, cliccare col tasto destro del mouse l'icona "**Computer**" come indicato in figura:



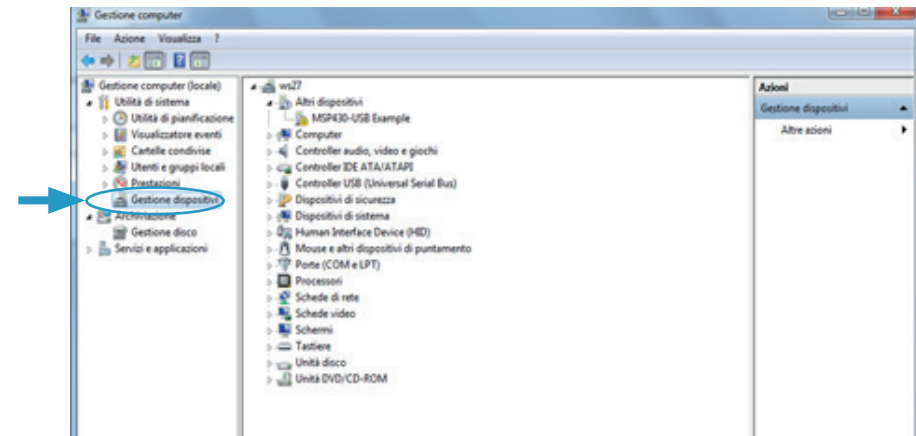
After selecting “**Manage**”, the following window will appear:



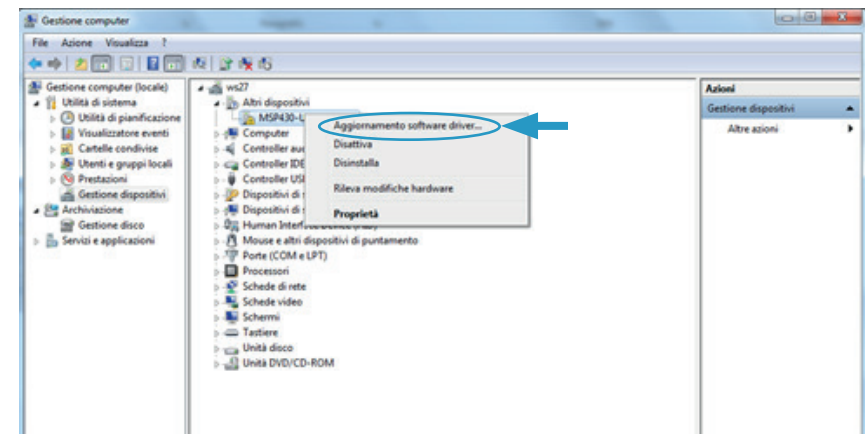
Click “**Device Manager**”, then press the right mouse button on the “**MSP430-USB Example**” and then select from the dropdown menu “**Update Driver Software**”:



Dopo aver selezionato “**Gestione**” comparirà la seguente finestra:

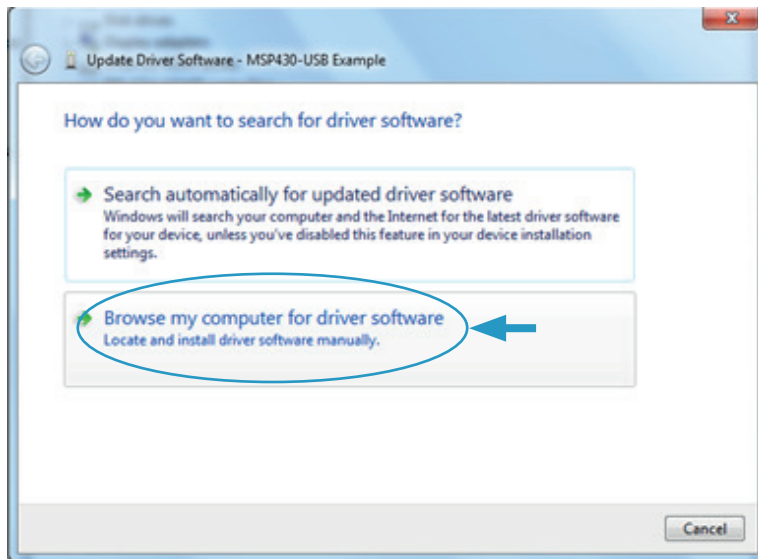


Cliccare dunque “**Gestione dispositivi**”, successivamente premere il tasto destro del mouse sull'icona “**MSP430-USB Example**” e infine selezionare nel menù a tendina “**Aggiornamento software driver**”:

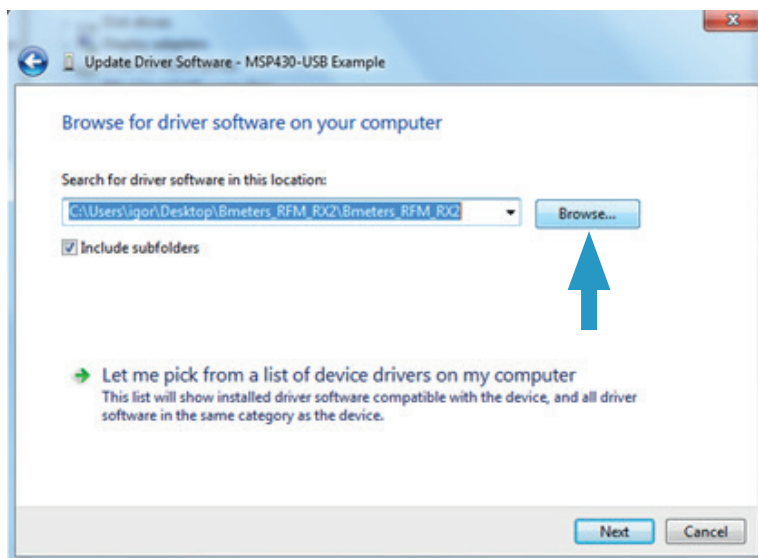




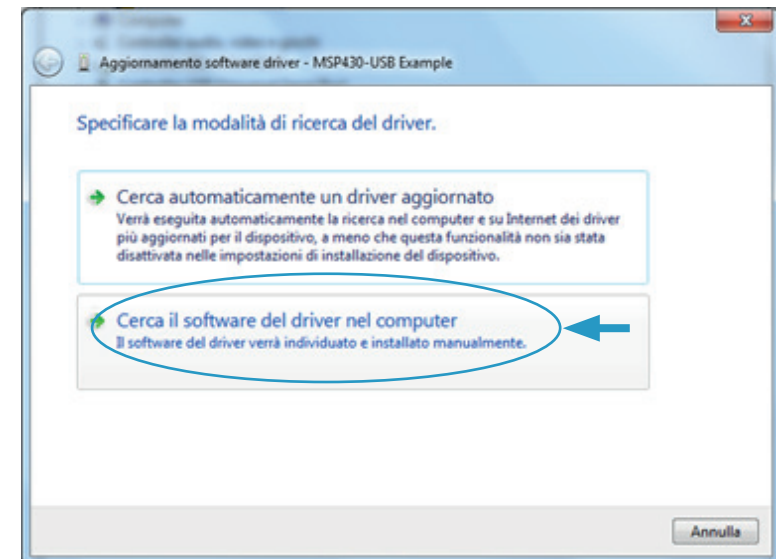
The following window will appear.  
Then select **“Browse my computer for driver software”**:



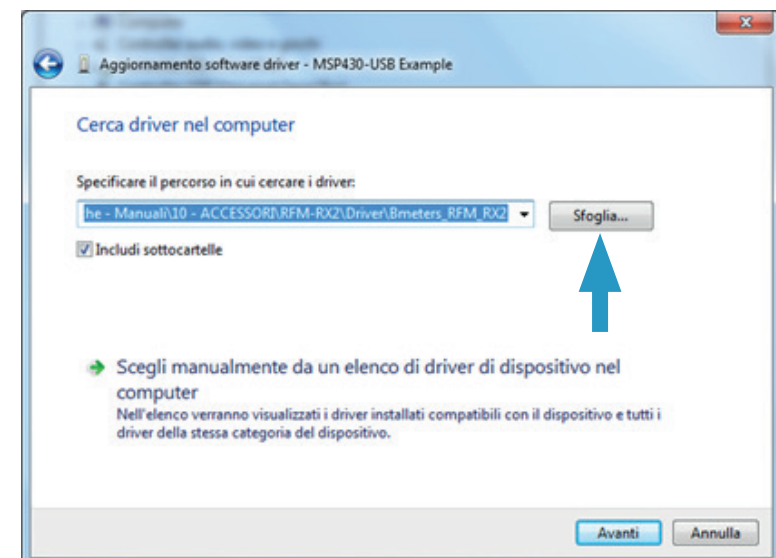
Using the **“Browse”** button select the path to get the folder containing the installation driver **“Bmeters\_RFM\_RX2”**:



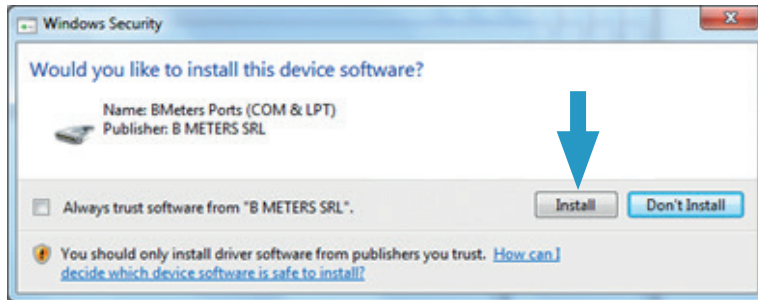
In seguito comparirà la seguente finestra.  
Selezionare dunque **“Cerca il software del driver nel computer”**:



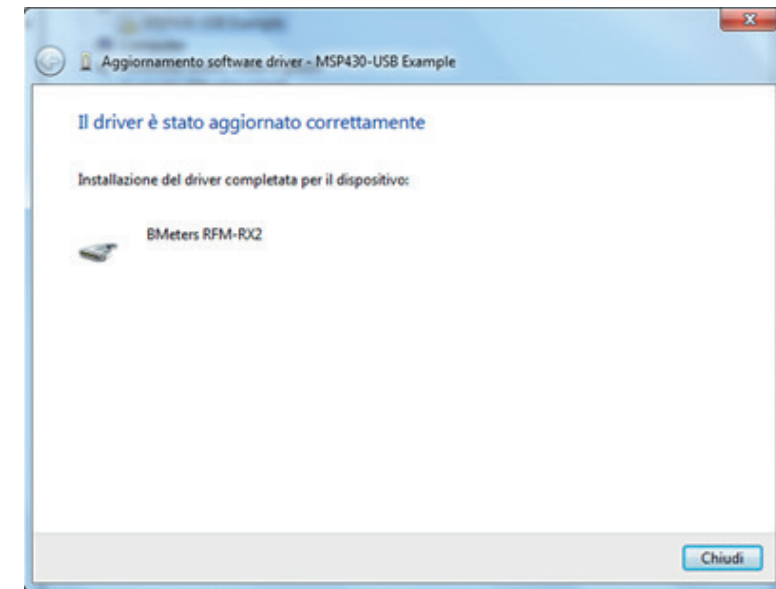
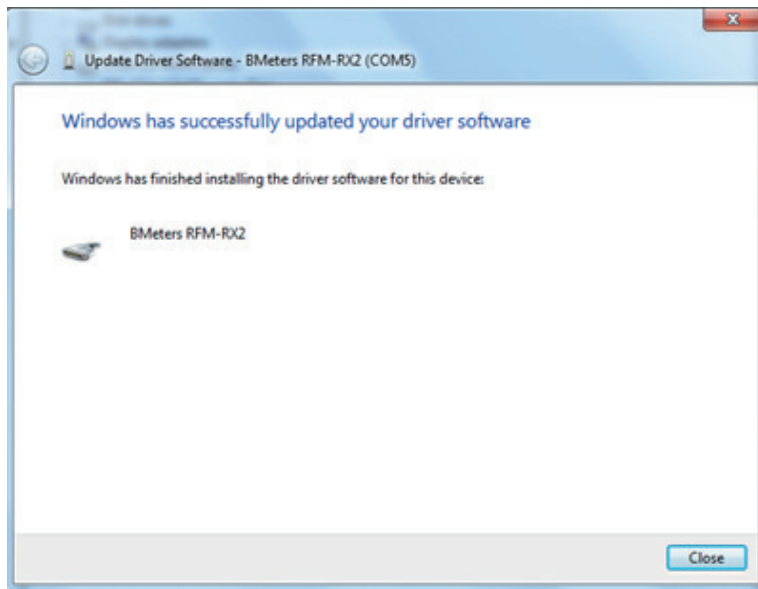
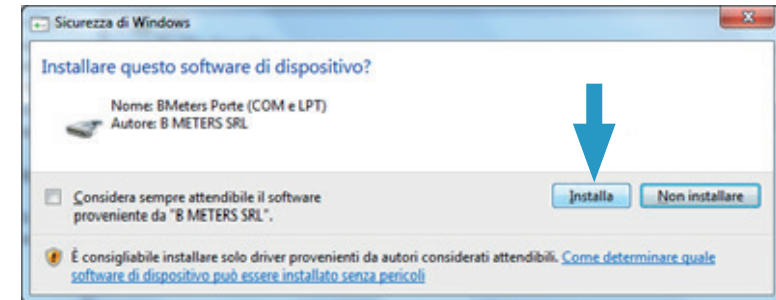
Tramite il tasto **“Sfoglia”** selezionare il percorso per raggiungere la cartella contenente il driver di installazione **“Bmeters\_RFM\_RX2”**:



Click on **“Next”**, then **“Install”** and when the following window appears, the manual installation of the driver can be considered successfully completed and the transceiver **“RFM-RX2”** is ready for use.



Premere il tasto **“Avanti”**, poi **“Installa”** e quando comparirà la seguente finestra l'installazione manuale del driver può ritenersi conclusa con successo e il ricetrasmittitore **“RFM-RX2”** è pronto all'utilizzo.

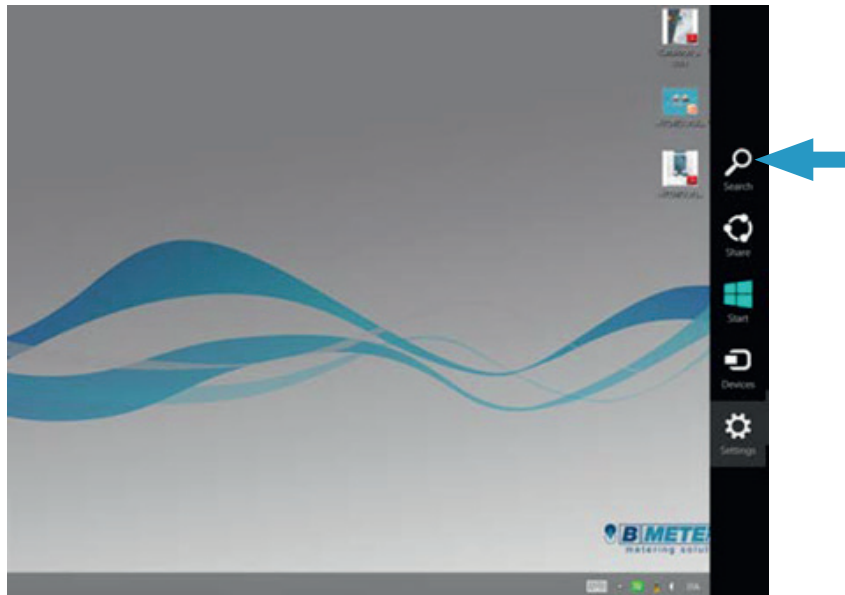




### 3.3 Windows 8 installation

After inserting the RFM-RX2 receiver, you need to:

- Open the menu (Charm Bar) and press the “**Search**” button;
- Type “**Device Manager**” in the search bar;
- Select “**Device Manager**”;
- Now the “**Device Manager**” screen will appear.

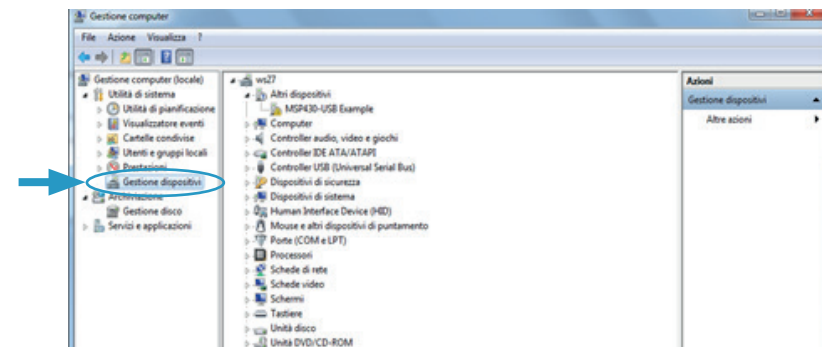
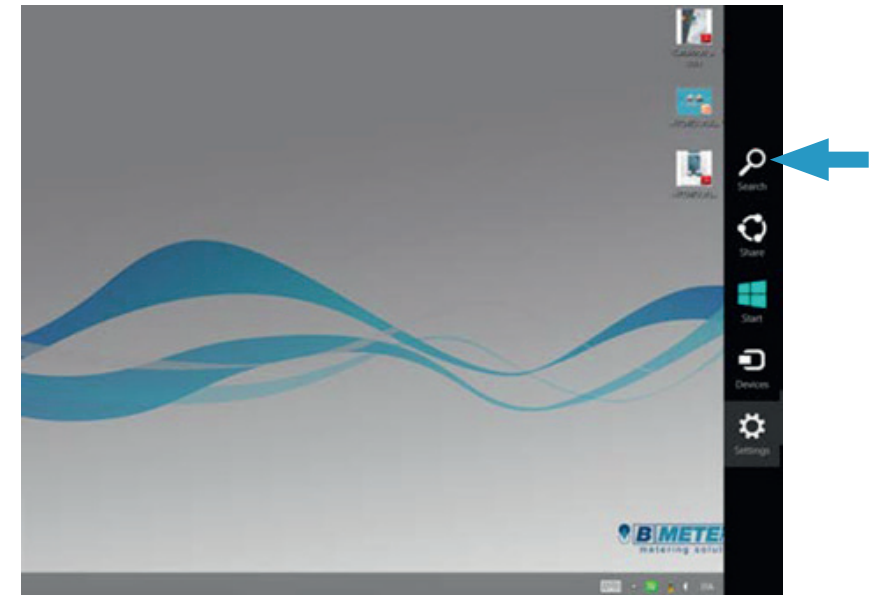


From now on, proceed the installation referring to the procedure described at the point 3.2 (Windows 7/Vista).

### 3.3 Installazione Windows 8

Dopo aver inserito il ricevitore radio RFM-RX2, è necessario procedere come segue:

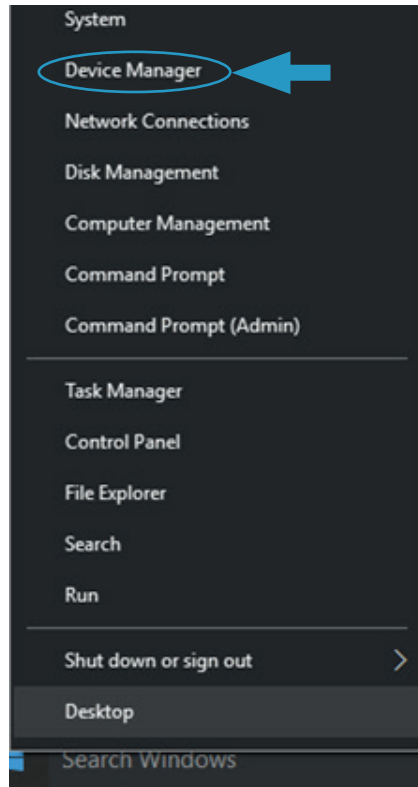
- Aprire il menu (Charm Bar) e posizionarsi su “**Ricerca**”;
- Digitare “**Gestione Dispositivi**” nella barra di ricerca;
- Selezionare la voce “**Gestione dispositivi**”;
- Ora si aprirà il pannello “**Gestione Dispositivi**”.



Da questo punto in poi, proseguire l'installazione facendo riferimento a quella descritta al punto 3.2 (Windows 7/Vista).

### 3.4 Windows 8.1 Installation

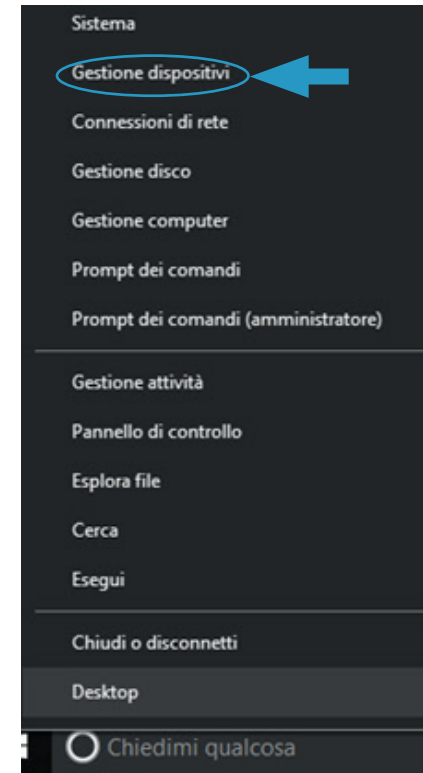
Right-click on the Start Button and select the option “**Device Manager**”.



From now on, proceed the installation referring to the procedure described at the point 3.2 (Windows 7/Vista).

### 3.4 Installazione Windows 8.1

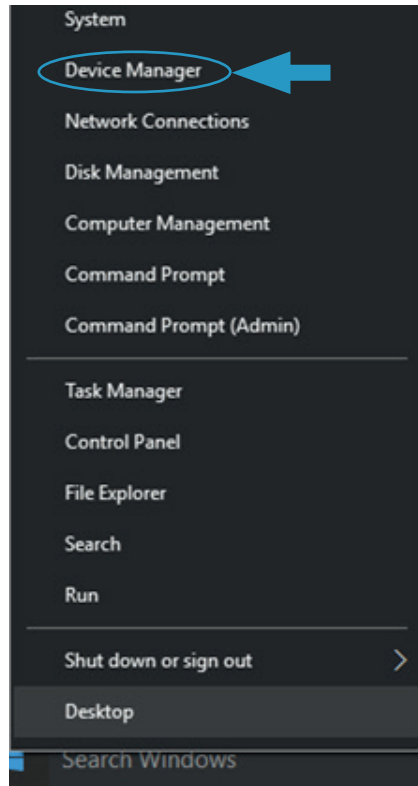
Cliccare col tasto destro del mouse sul pulsante Start e selezionare la voce “**Gestione Dispositivi**”.



Da questo punto in poi, proseguire l'installazione facendo riferimento a quella descritta al punto 3.2 (Windows 7/Vista).

### 3.5 Windows 10 Installation

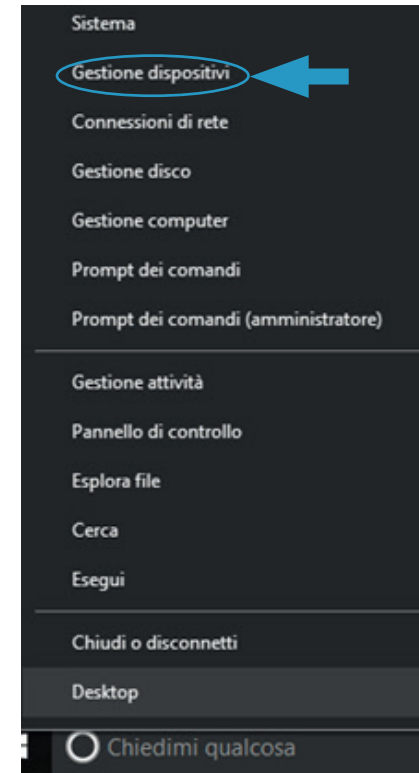
Right-click on the Start Button and select the option “**Device Manager**”.



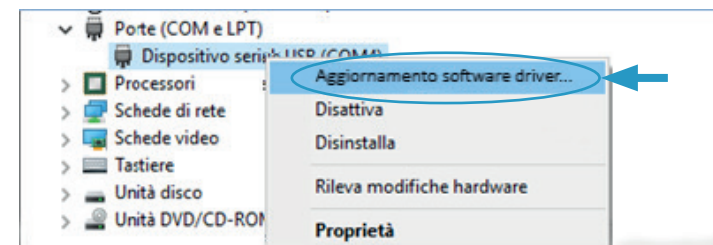
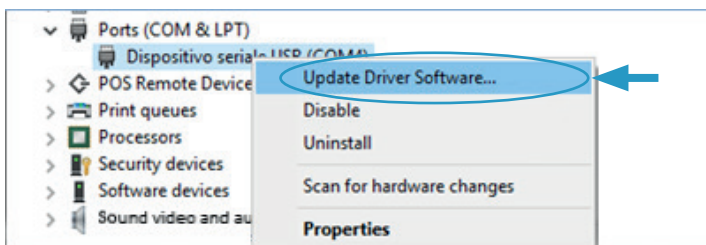
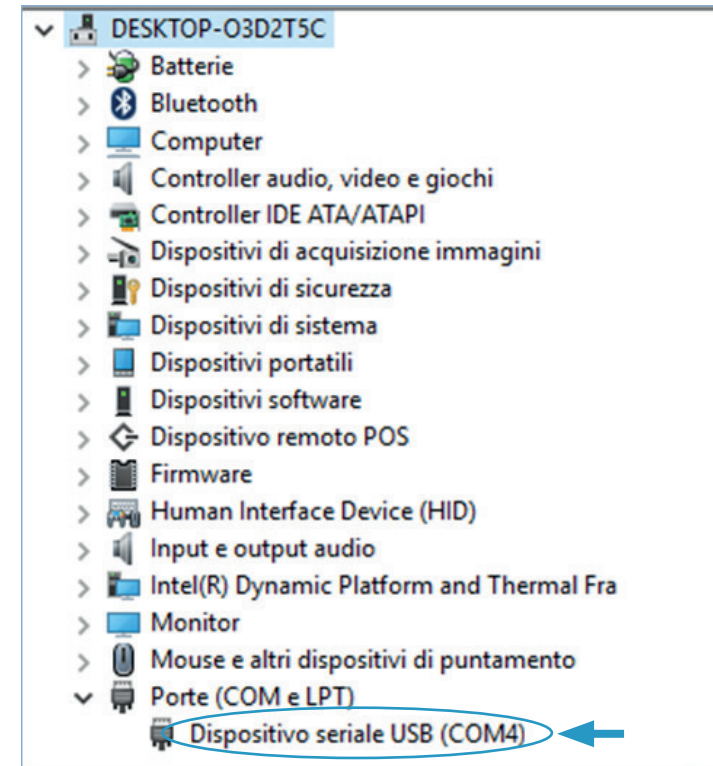
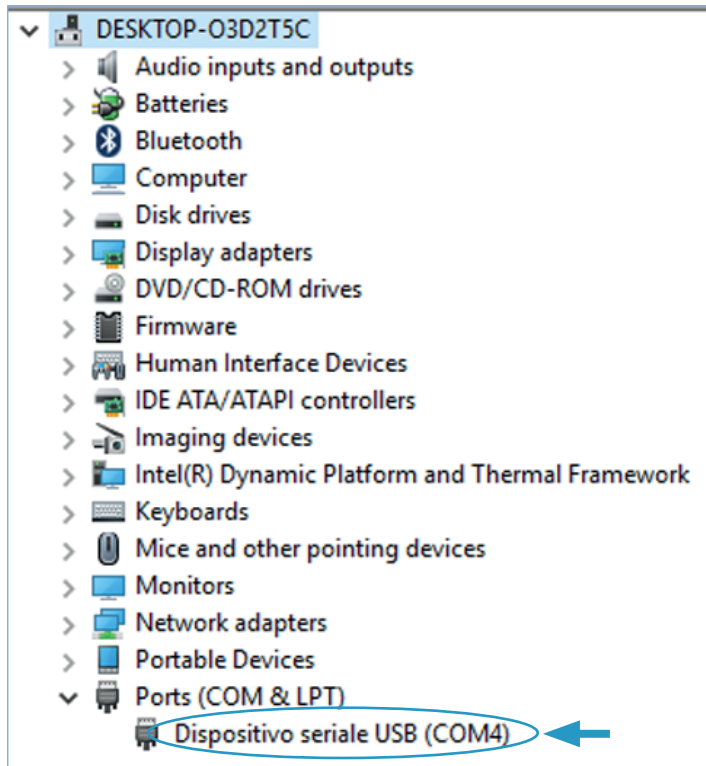
Windows 10 recognizes the RFM-RX2 receiver as a serial device. You need to expand **Ports (COM & LPT)**, right-click on “Serial USB device” and click on “**Update Driver Software**”.

### 3.5 Installazione Windows 10

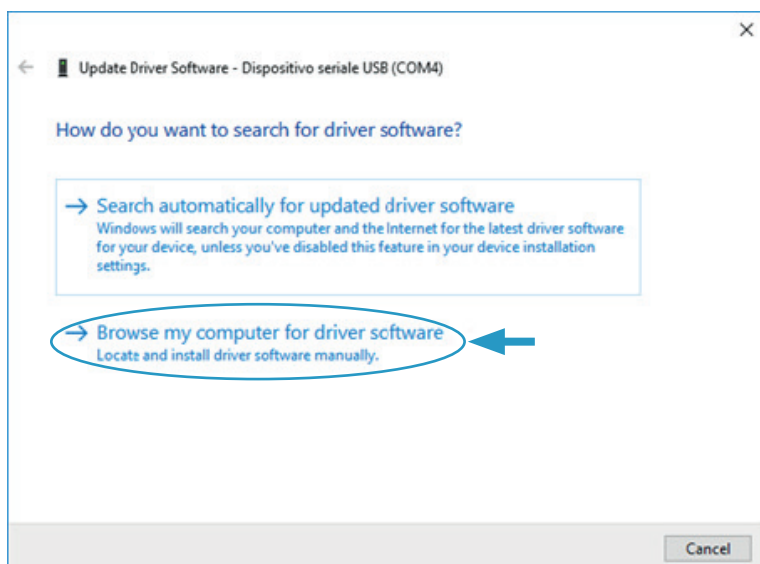
Cliccare col tasto destro del mouse sul pulsante Start e selezionare la voce “**Gestione Dispositivi**”.



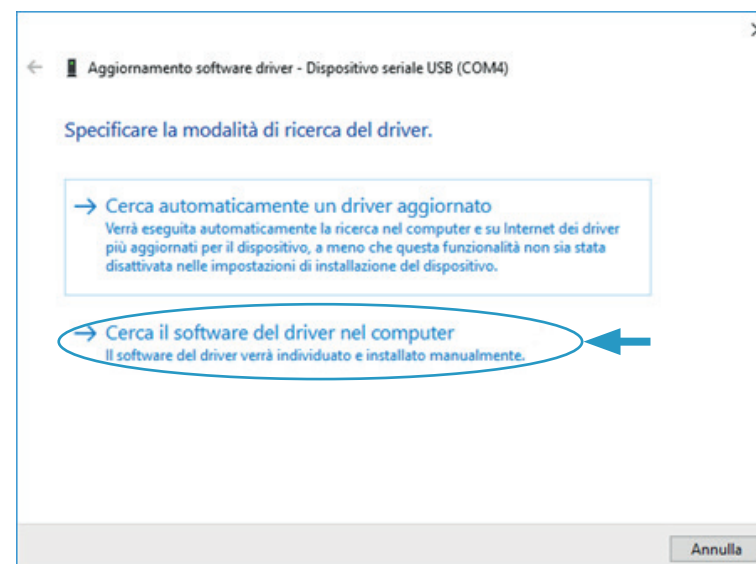
Windows 10 riconosce il ricevitore RFM-RX2 come dispositivo seriale. É dunque necessario espandere la voce **Porte (COM e LPT)**, cliccare con il tasto destro del mouse su “Dispositivo seriale USB” e selezionare di conseguenza “**Aggiorna software driver**”.



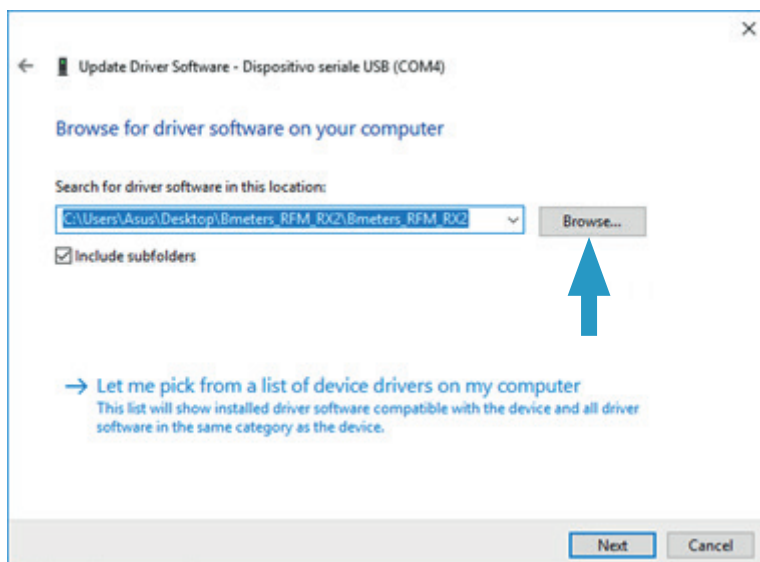
The following window will appear.  
Then select **“Browse my computer for driver software”**:



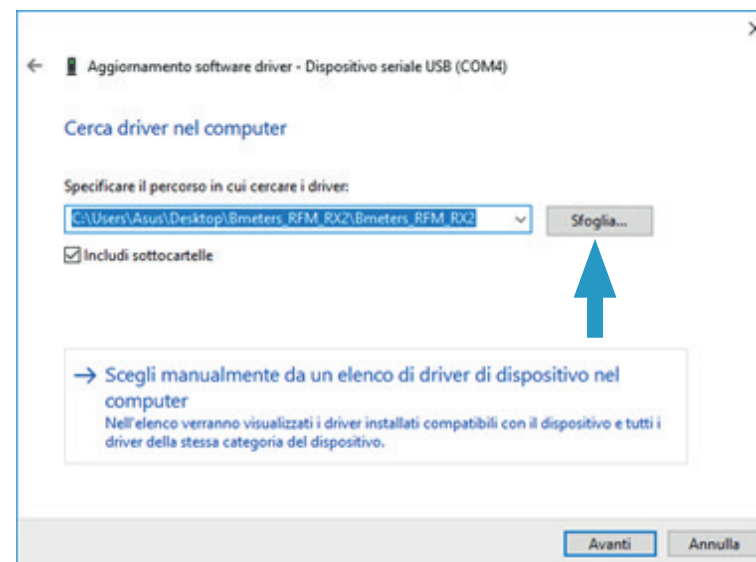
In seguito comparirà la seguente finestra.  
Selezionare dunque **“Cerca il software del driver nel computer”**:



Using the **“Browse”** button select the path to get the folder containing the installation driver **“Bmeters\_RFM\_RX2”**:

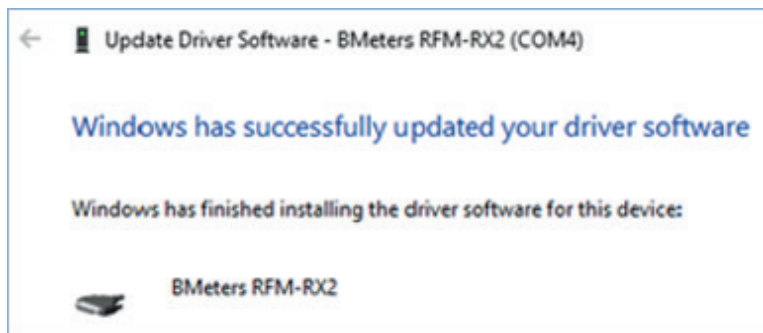


Tramite il tasto **“Sfoggia”** selezionare il percorso per raggiungere la cartella contenente il driver di installazione **“Bmeters\_RFM\_RX2”**:

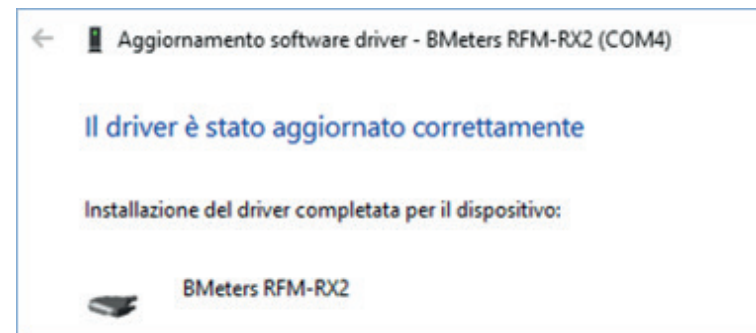




Click on "**Next**" and as the following window appears, the installation of the driver can be considered successfully completed and the transceiver "RFM-RX2" is ready to use.



Premere il tasto "**Avanti**" e quando comparirà la seguente finestra l'installazione manuale del driver può ritenersi conclusa con successo e il ricetrasmittitore "RFM-RX2" è pronto all'utilizzo.



### Contact Info

**B METERS srl**  
Via Friuli, 3 • Gonars 33050 (UD) • ITALY

Tel: +39 0432931415  
Fax: +39 0432992661

E-Mail (sales/info): [info@bmetrics.com](mailto:info@bmetrics.com)  
E-mail (support): [ticket@bmetrics.com](mailto:ticket@bmetrics.com)  
Web: [www.bmetrics.com](http://www.bmetrics.com)