

# ABSOLUTE Digimatic Scale Units

## SERIES 572

### FEATURES

- The ORIGIN key allows setting of an absolute zero point to be used as reference in subsequent measurements. Once set, the ABS Digimatic Scale Unit is ready to show its true position whenever turned on rather than 0.00" as with standard models.
- The ZERO/ABS key allows the display to be zero-set at any slider position along the beam for incremental comparison measurements. This key will also allow return to the absolute coordinate with a display of the true position from the origin point.
- No rack, no pinion, no glass scale. Digimatic Scale Unit is safely embedded in the hardened stainless steel blade.
- Horizontal or vertical face according to the scale mounting direction.
- Special type that is provided with diameter displaying function is available for lathes.
- All units come with two mounting brackets, each located at either end of the scale.
- With SPC data output.

Horizontal single function type



Horizontal multi-function type



Horizontal multi-function type



Vertical single function type



Vertical multi-function type



Vertical multi-function type



### Technical Data

Accuracy: Refer to the list of specifications.  
 Resolution: 0.01mm or .0005"/0.01mm  
 Display: LCD  
 Length standard: ABSOLUTE electrostatic capacitance type linear encoder  
 Max. response speed: Unlimited  
 Battery: SR44 (1 pc.), **938882**  
 Battery life: Approx. 3.5 years under normal use

### Function

Origin-set, Zero-setting, Power on/off, Presetting, Data hold, Data output, inch/mm conversion (on inch/metric models only), Counting direction switching\*  
 Alarm: Low voltage, Counting value composition error  
 \*not available for single function models

### Optional Accessories

- 959143:** Data hold unit for single function type
- 959149:** SPC cable with data switch for single function type (40" / 1m)
- 959150:** SPC cable with data switch for single function type (80" / 2m)
- 905338:** SPC cable (40" / 1m standard)
- 905409:** SPC cable (80" / 2m standard)
- 905689:** SPC cable (40" / 1m L-shape, back)
- 905690:** SPC cable (80" / 2m L-shape, back)
- 905691:** SPC cable (40" / 1m L-shape, right)
- 905692:** SPC cable (80" / 2m L-shape, right)
- 905693:** SPC cable (40" / 1m L-shape, left)
- 905694:** SPC cable (80" / 2m L-shape, left)

Refer to bottom of page H-2 for SPC cable details

## SPECIFICATIONS

### Metric

Range	Order No.		Accuracy	Resolution
	Horizontal	Vertical		
100mm	572-200-20	572-300-10	0.03mm	0.01mm
	572-460*	572-560*	0.03mm	0.01mm
	572-480-10**	572-580-10**	0.03mm	0.01mm
150mm	572-201-20	572-301-10	0.03mm	0.01mm
	572-461*	572-561*	0.03mm	0.01mm
	572-481-10**	572-581-10**	0.03mm	0.01mm
200mm	572-202-20	572-302-10	0.03mm	0.01mm
	572-462*	572-562*	0.03mm	0.01mm
	572-482-10**	572-582-10**	0.03mm	0.01mm
300mm	572-203-10	572-303-10	0.04mm	0.01mm
	572-463*	572-563*	0.04mm	0.01mm
	572-483-10**	572-583-10**	0.04mm	0.01mm
450mm	572-464*	572-564*	0.04mm	0.01mm
	572-484-10**	572-584-10**	0.04mm	0.01mm
600mm	572-465*	572-565*	0.05mm	0.01mm
	572-485-10**	572-585-10**	0.05mm	0.01mm
800mm	572-466*	572-566*	0.06mm	0.01mm
	572-486-10**	572-586-10**	0.06mm	0.01mm
1000mm	572-467*	572-567*	0.07mm	0.01mm
	572-487-10**	572-587-10**	0.07mm	0.01mm

\* Multi-function type  
 \*\* Multi-function type with diameter displaying function for lathe  
 (Counting direction switching function is not provided.)

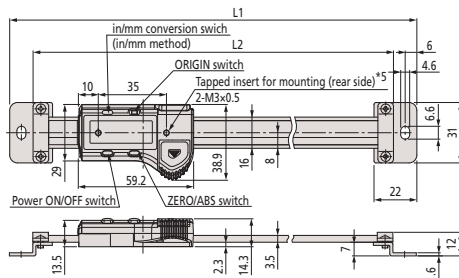
### Inch/Metric

Range	Order No.		Accuracy	Resolution
	Horizontal	Vertical		
4" / 100mm	572-210-20	572-310-10	.001"	.0005" / 0.01mm
	572-470*	572-570*	.001"	.0005" / 0.01mm
	572-490-10**	572-590-10**	.001"	.0005" / 0.01mm
6" / 150mm	572-211-20	572-311-10	.001"	.0005" / 0.01mm
	572-471*	572-571*	.001"	.0005" / 0.01mm
	572-491-10**	572-591-10**	.001"	.0005" / 0.01mm
8" / 200mm	572-212-20	572-312-10	.001"	.0005" / 0.01mm
	572-472*	572-572*	.001"	.0005" / 0.01mm
	572-492-10**	572-592-10**	.001"	.0005" / 0.01mm
12" / 300mm	572-213-10	572-313-10	.002"	.0005" / 0.01mm
	572-473*	572-573*	.002"	.0005" / 0.01mm
	572-493-10**	572-593-10**	.002"	.0005" / 0.01mm
18" / 450mm	572-474*	572-574*	.002"	.0005" / 0.01mm
	572-494-10**	572-594-10**	.002"	.0005" / 0.01mm
24" / 600mm	572-475*	572-575*	.002"	.0005" / 0.01mm
	572-495-10**	572-595-10**	.002"	.0005" / 0.01mm
32" / 800mm	572-476*	572-576*	.0025"	.0005" / 0.01mm
	572-496-10**	572-596-10**	.0025"	.0005" / 0.01mm
40" / 1000mm	572-477*	572-577*	.0025"	.0005" / 0.01mm
	572-497-10**	572-597-10**	.0025"	.0005" / 0.01mm

\* Multi-function type  
 \*\* Multi-function type with diameter displaying function for lathe  
 (Counting direction switching function is not provided.)

## DIMENSIONS AND MASS

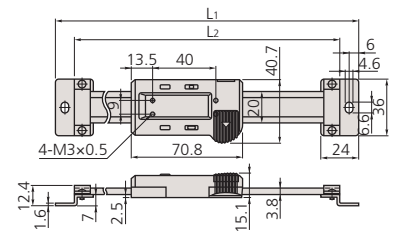
Single function type horizontal (100-200mm / 4-8")



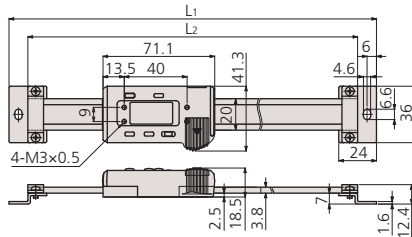
572-200-20~572-202-20  
 572-210-20~572-212-20

Range	L1	L2	Mass
4" / 100mm	209	185	230
6" / 150mm	259	235	250
8" / 200mm	311	287	270
12" / 300mm	444	420	370

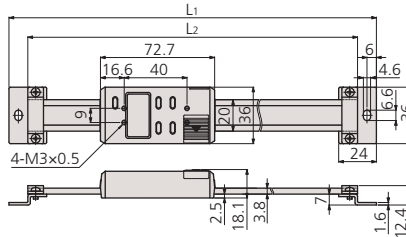
Single function type horizontal (300 / 12")



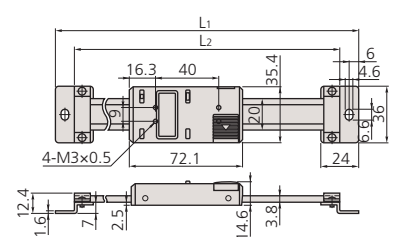
Multi function type horizontal (100-300mm / 4-12")



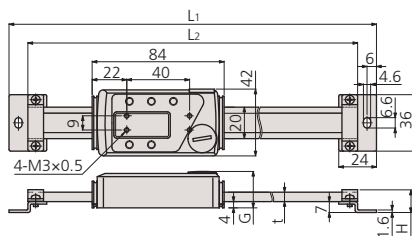
Multi function type vertical (100-300mm / 4-12")



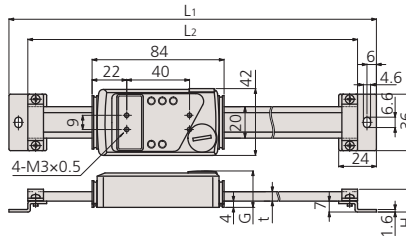
Single function type vertical (100-300mm / 4-12")



Multi function type horizontal (450-1000mm / 18-40")



Multi function type vertical (450-1000mm / 18-40")



Range	L1	L2	Mass
4" / 100mm	244	220	250
6" / 150mm	294	270	280
8" / 200mm	344	320	310
12" / 300mm	444	420	370
18" / 450mm	594	570	760
24" / 600mm	774	750	900
32" / 800mm	974	950	1710
40" / 1000mm	1174	1150	2040

Unit: mm